

Cost Effectiveness

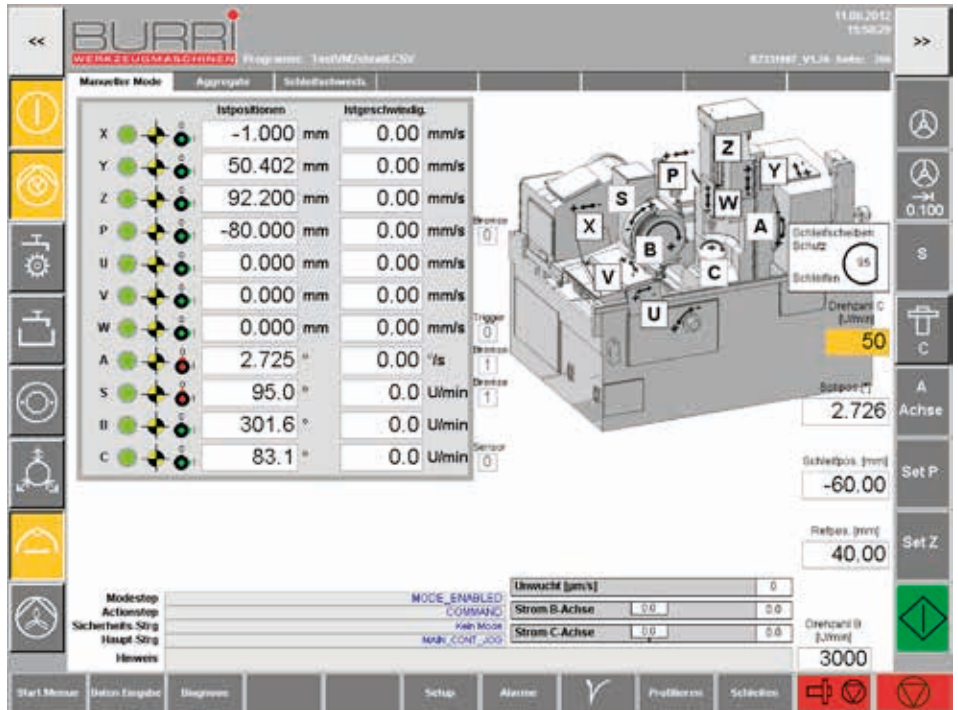
and Innovation

Made in Germany



**Generating and profile grinding
machine BZ 331 / BZ 362**

The basis for BZ 331 / BZ 362 machine types are Reishauer machine types RZ 362, RZS, RZ 361 (max. gear diameter 360 mm) as well as RZ 301 and AZA (max. gear diameter 330 mm). We are only using the machine bed with the turning part for helix angle adjustment and the housing of the grinding support. All other components are newly developed. The machines are designed for generating and profile grinding and therefore very flexible in use. They offer the best price-performance ratio in their class. After modernization, the machines are supplied as new machines with CE conformity and new technical documentation. The technical equipment is also at the level of a new machine. The BZ 331 / BZ 362 machine types have an unbeatable energy efficiency (8 kVA in production).



Arrangement of the axes



Profile grinding



Dressing generating grinding



Generating grinding

Technical data:

Workpiece Ø:	330/360 mm
Module range:	0,5 – 7 mm (generating grinding)
Profile height (max.):	25 mm (profile grinding)
Workpiece length:	600 mm*
Helix angle:	+45° to -45°
Workpiece weight (max.):	60 kg
Cutting speed (max.):	63 m/sec.
Grinding pass (max.):	210 mm
Grinding wheel dimensions:	350 x 104 x 160 mm (D x W x d)
Dressing disc dimensions:	120 – 140 x 40 x 52 mm (D x W x d)

*Minus clamping devices and tailstock center

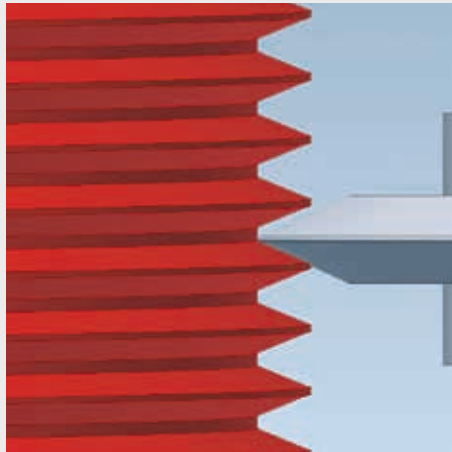


NC dressing profile grinding

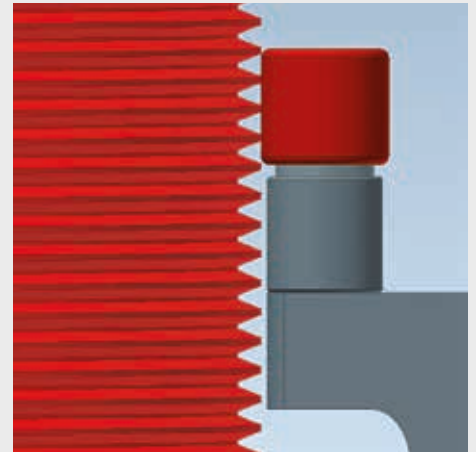
The BZ 331 / BZ 362 machines are equipped with the following newly developed components as a standard: Direct drives in grinding and workpiece spindle, linear guides and ball screws, Heidenhain linear scales, Z slide with NC tailstock, profiling slide with automatically swivelling profiling unit, compact hydraulic unit, centering sensor, balancing system with integrated acoustic touch control, automatic loading door, new control unit, new control cabinet (mounted on the machine, also during transport), data storage via Compact Flash card (CF card) with a capacity of more than a thousand gear programs, remote service, OPC/UA for industry 4.0 and other applications.

The standard colour of the machine is pure white (RAL 9010) or can be customized.

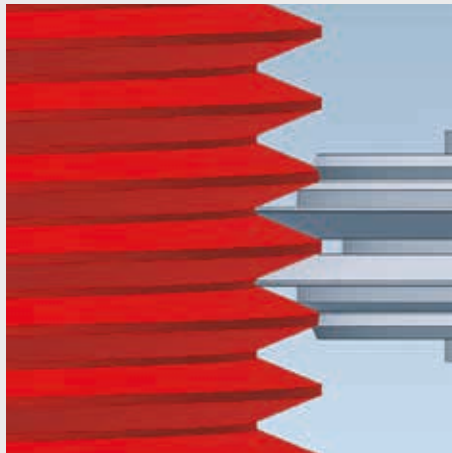
Dressing technologies



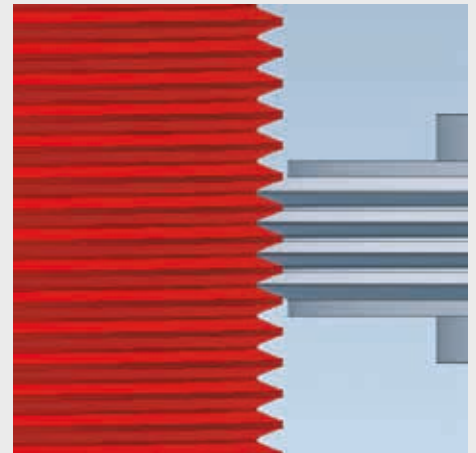
Double cone disc for single and double flank dressing



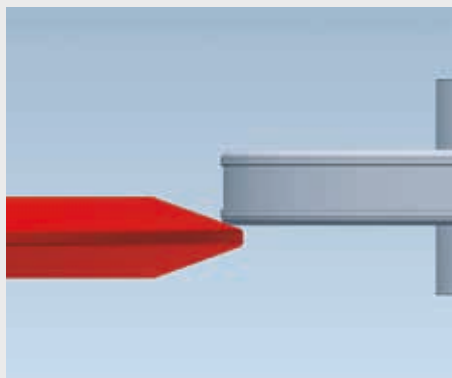
Outside diameter dresser



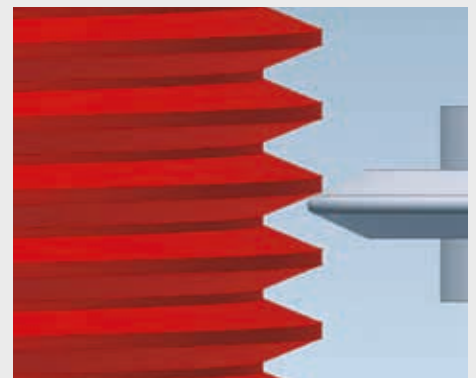
Composite roll



Multirib composite roll



NC dresser for profile grinding



Radius roll for line dressing



Our sales network

From Germany to the world – More informations: www.burri.de



BURRI
WERKZEUGMASCHINEN

Burri Werkzeugmaschinen GmbH & Co. KG

Im Wasen 9 | 78667 Villingendorf

Tel.: +49 (0)741 1748898-0 | Fax: +49 (0)741 1748898-22

E-Mail: info@burri.de | vertrieb@burri.de | www.burri.de