

Hamai New N70 CNC Horizontal Hobbing Machine

TO THE **N**th DEGREE



Ready to take your horizontal hobbing to the Nth degree?

Introducing the HAMAI N70. Under the design concept of "COMPACT BUT POWER FULL", this machine was developed. It's a quantum leap forward, for exceptionally fast production of high precision aerospace, automotive and shaft gears up to 120 mm in diameter, and cutting capacity to M2.5. Exceptionally easy to operate using the interactive input with graphic display, and available fully automated to reduce load/unload time by adapting the slant type hob head.

HAMAI
TOKYO JAPAN



Machine Tool Builders

REBUILDING • RECONTROLLING • SERVICE



MOTION+POWER
TECHNOLOGY EXPO

See us at:
BOOTH #3206

machinetoolbuilders.com | (815) 636-7502

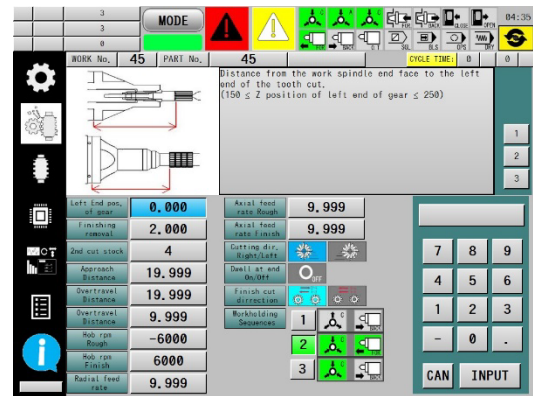
Hamai New N70 CNC Hobbing Machine

MACHINE RIGIDITY:

Using the latest structural analysis software, the machine body with cast iron is designed the shape to eliminate the machine vibration and load, achieving the significant increase in rigidity. The bed shape is not only rigid but also designed to emphasize machining during dry cutting and to prevent chips from accumulating, thereby improving maintainability. Hob and work spindles are directly connected by the built-in motors, and the motor torque has been greatly increased to enable high-speed hob spindle, continuous high feed rate machining of gears with the maximum M2.5.

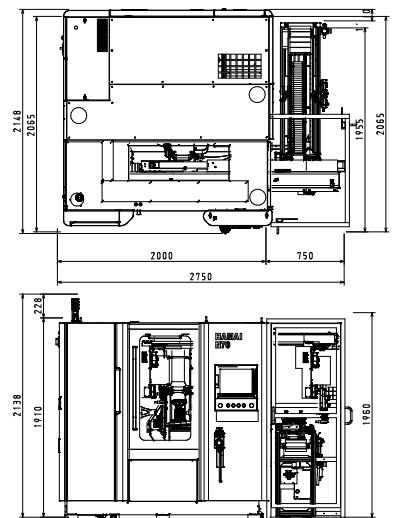
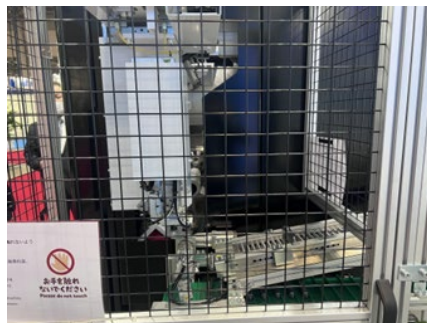
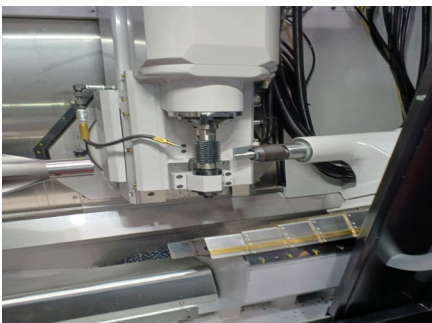
OPERATION:

The latest FANUC FS31i-B Plus with 15-inch color touch panel allows almost all operations to be performed on the screen. The "interactive data input screen" for setting data required for machining has been completely redesigned, with extensive use of icon images in addition to graphic screens and explanatory text displays, making it easy for anyone to understand. The tailstock movement is the torque-controlled by servo motors. Thrust force values for the center can be easily set by entering it from the operation screen. This increases the usable thrust force range and allows setting the optimum thrust force value for the workpiece.



AUTOMATION:

To improve the efficiency of automation, the slant type hob spindle head is adopted at the shortest possible distance when using with the gantry loader specification. Even in the case of the articulated robot specification, the slant angle of the hob spindle expands the movable range of the robot arm, reducing unnecessary movements and facilitating teaching work.



MAIN SPECIFICATION:

Max. diameter:	120 mm	Max. cutting length	200 mm	Max. module	2.5M
Max. Hob spindle	6000 rpm	Max. work spindle	1000 rpm	Hob shift length	100 mm
Axial movement	200 mm	Tailstock movement	250 mm	Rapid feed	8000 mm/min
Floor space	2000 x 2100mm	Machine height	1910 mm	Machine weight	5500 kgs

HAMAI HAMAI CO., LTD. <https://www.hamai.com>

5-5-15, Nishi-Gotanda, Shinagawa-ku, Tokyo, Japan, Phone: 81334910131